

CONCEALED CORNER (U)

Build in textile frame

BFCC86 Silver

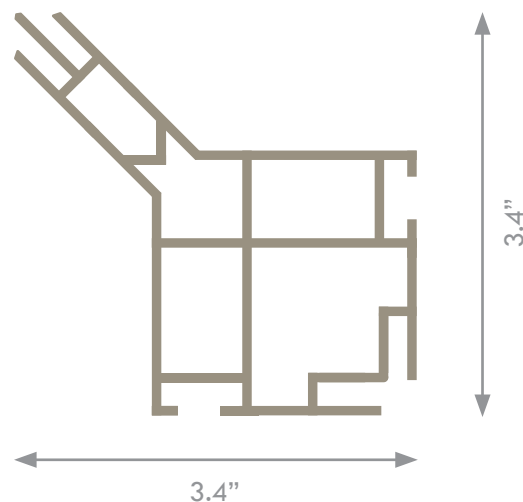
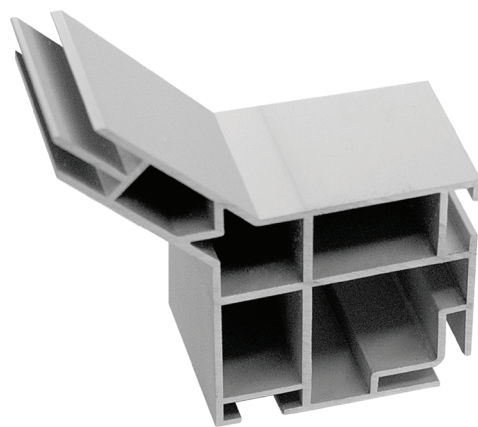
Colors:



Silver

Available in every color on request.

Application:	Freestanding and suspended from ceiling
Width:	3.4 inches (86mm)
Length:	Up to 20 feet
Option:	Stabilizers for optimum reinforcement



The concealed corner profile is uniquely designed to accept textile graphics on both sides, creating dramatic displays with completely hidden support structures. This unique, double sided 3D profile is used to create freestanding trade show booths in L and U shaped formations as well as product support podiums, tables and risers for showrooms and exhibits. Additionally, world class hanging signs, open from the bottom with textile graphics inside and out are easily produced.

- Suitable for oversized structures
- Ideal for a partition wall, freestanding trade show booth, podium, table riser or suspended banner
- Combines with the Double 80 profile (open or closed):
- The concealed corner profile is used as the vertical corner component with the Double 80 profile.
- Configuration examples are shown on the following page

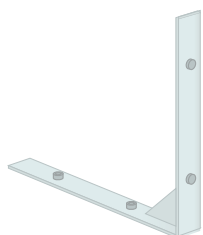
U-Formation

The U-Shape formation consists of three double-sided walls, created with the Double-80 frame, attached to two concealed corner verticals. This extended formation is commonly used for trade show exhibits or partition walls when used freestanding.

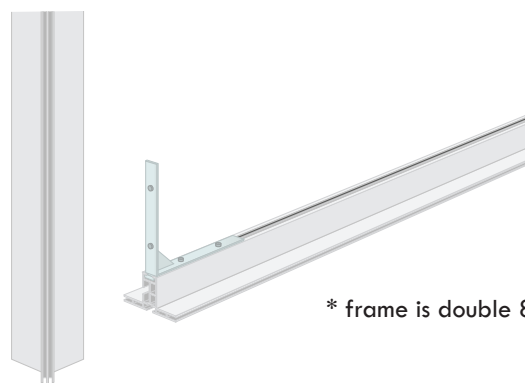
- 2 x Lengths of Concealed Corner (vertical)
- 8 x Lengths of Double 80
- 4 x Endcaps for Concealed Corner



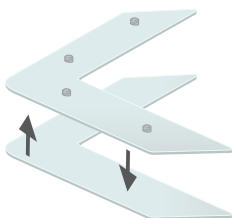
BH0280



BH0280

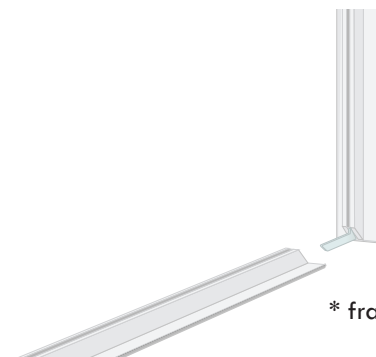


* frame is double 80



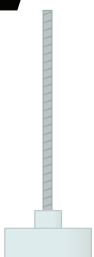
BH0200

Each frame is delivered with the right amount of locksets heavy.



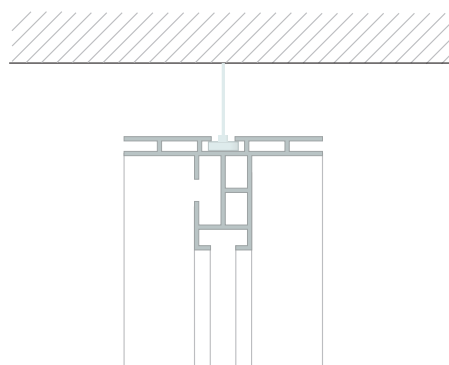
* frame is double 80

Optional



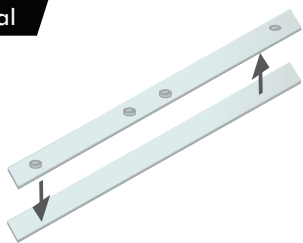
BH7900

Suspended from ceiling.



* frame is double 80

Optional

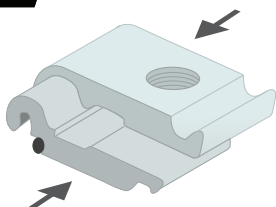


BH0500

If the length of the frame is longer than 13 feet, an extension set (BH0500) is included.

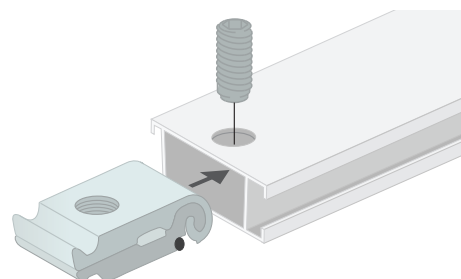


Optional

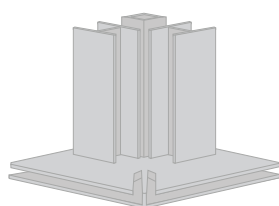


BH0220

When connecting the stabilizer, first place the lockset in the channel.

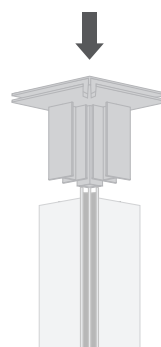


Then put the stabilizer (BFSTS) on the lockset, now tighten the screw with the delivered allen key.

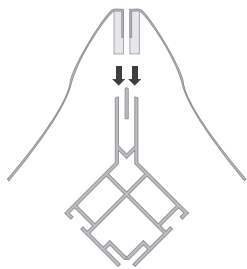


BH0725

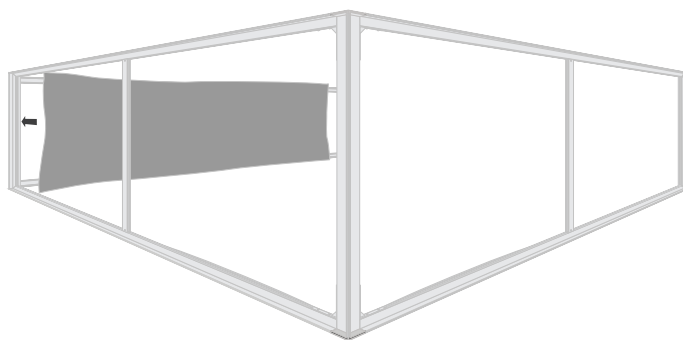
Endcap for all corners of the frame.



Place the endcap on top or bottom of the frame.



Place the textile print in the frame. Start with the corners and press the silicone strip in the channel



EXHIBITION STAND

Illustration of the Concealed Corner (U)
in use as an exhibition stand

