

LIGHTBOX 200 DOUBLE

Standing and hanging textile LED frame

BF200S Silver

BF200B Black

BF200W White

Colors:



Silver



Black



White

Available in every color on request.

Application: Freestanding and suspended from ceiling

Width: 8 inches (200mm)

Length: Up to 20 feet

Option: Sound absorbing felt in combination without LED's

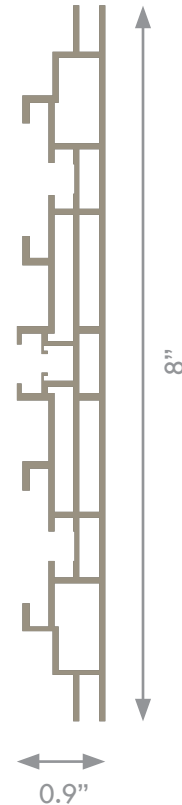
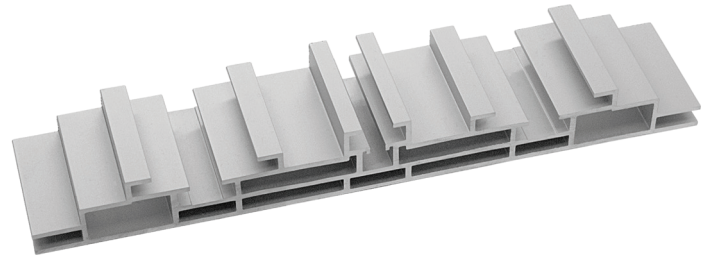
Possibilities: By LED on stabilizer is any size possible



EL 9206-1148

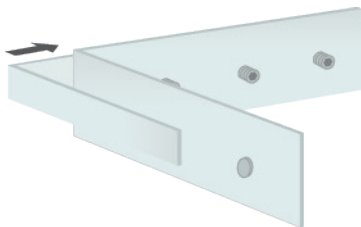


CERTIFIED



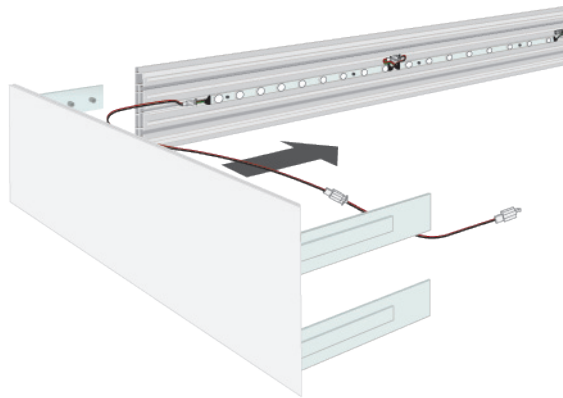
This double sided 8" inch deep profile is designed to create huge, impressive displays that are structurally stable to illuminate large size textile prints. Even illumination is provided by BFF's Ultra-LEDs mounted to the inside channel of the frame. Used in tradeshow exhibitions, retail and hospitality venues to stop visitors in their tracks. BFF lightboxes are amazing products for the display graphics industry!

- 8" deep profile enables perfect light distribution
- Edge Lit with Ultra-LEDs
- Ships unassembled for low cost shipping
- Creates impressive, freestanding or suspended large double-sided illuminated displays

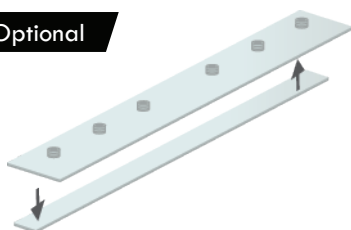


BH0230

Each frame is delivered with 4 locksets D200.

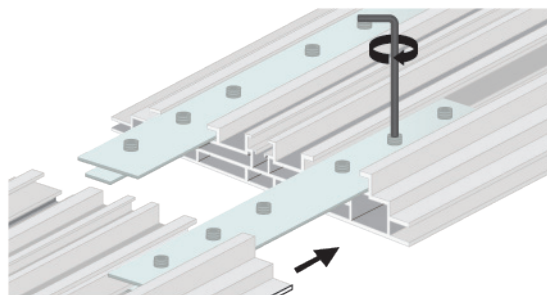


Optional

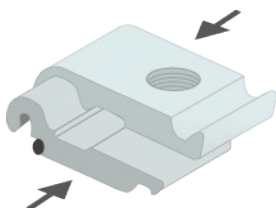


BH0530

If the length of the frame is longer than 4 meters, an extension set (BH0530) is included.

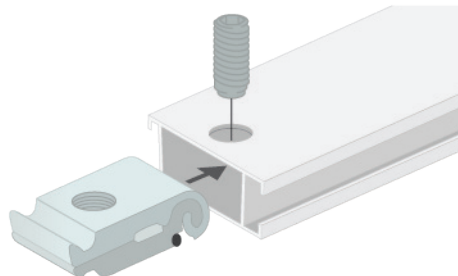


These extension sets can be placed in the channels where the frame is cut in half.



BH0220

When connecting the stabilizer, first place the lockset in the channel.



Then put the stabilizer (BFSTS) on the lockset, now tighten the screw with the delivered allen key.

Optional



LED POWER SUPPLY
200-240V



Sec.: 24VDC, Max 2.5A
tc: 80° ta: 45°C

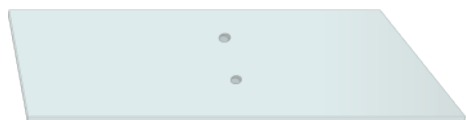
Optional



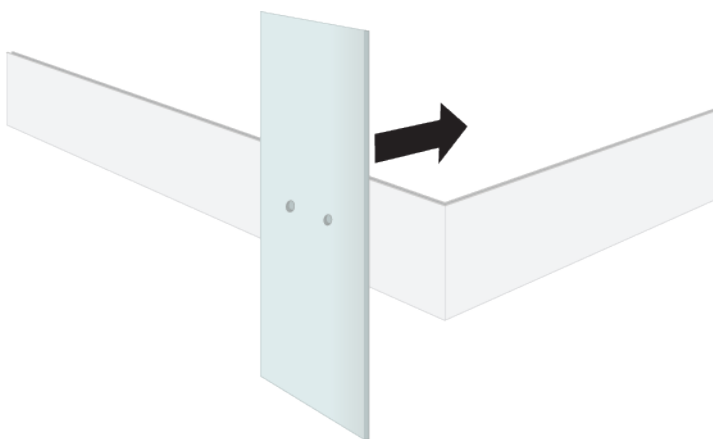
ULTRA LED UNIT
47cm x 25mm x 15mm. 5000-7000k White.
9x lenses 2.8W 24V.



Optional



BH0110
Footplate for standing. Material: Steel.



Optional



BH0306
Suspended from ceiling.

