

CONCEALED CORNER 44 (L)

Build in textile frame

BFCC44

Silver

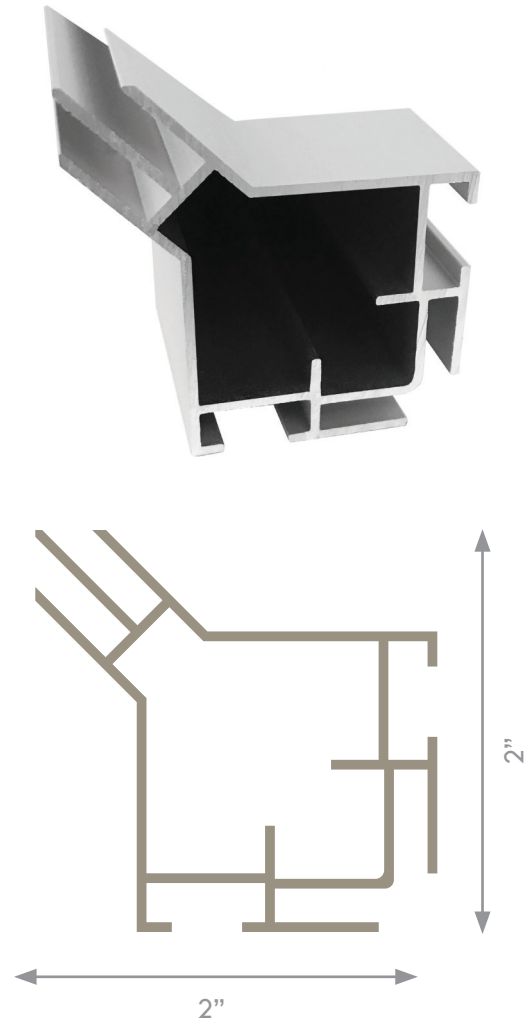
Colors:



Silver

Available in every color on request.

Application:	Freestanding
Width:	2 inches (51mm)
Length:	Up to 20 feet
Option:	Stabilizers for optimum reinforcement



The concealed corner profile is uniquely designed to accept textile graphics on both sides, creating dramatic displays with completely hidden support structures. This unique, double sided 3D profile is used to create freestanding trade show booths in L and U shaped formations as well as product support podiums, tables and risers for showrooms and exhibits. Additionally, world class hanging signs, open from the bottom with textile graphics inside and out are easily produced.

- Suitable for oversized structures
- Ideal for a partition wall, freestanding trade show booth, podium, table riser or suspended banner
- Combines with the Double 44 profile (open or closed):
- The concealed corner profile is used as the vertical corner component with the Double 44 profile.
- Configuration examples are shown on the following page

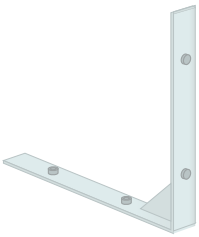
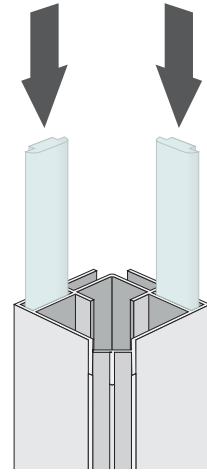
L-Formation

The L-Shape formation is a basic configuration for trade show exhibits or partition walls when used freestanding. It consists of two double-sided walls, created with the Double-44 frame, attached to a single vertical concealed corner profile.

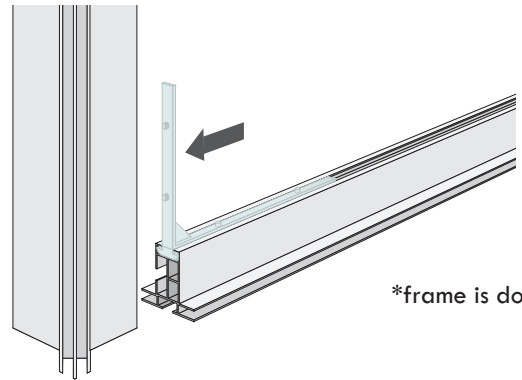
- 1 x Length of Concealed Corner 44 (vertical)
- 6 x Lengths of Double 44
- 2 x Endcaps for Concealed Corner 44



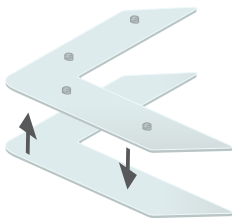
BH0280



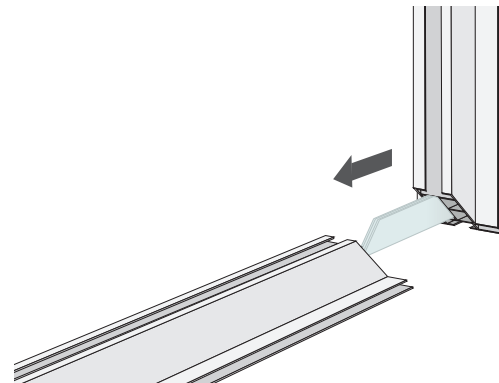
BH0280



*frame is double 44

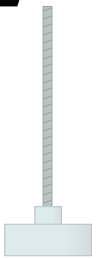


BH0200
Each frame is delivered with the right amount of locksets heavy.

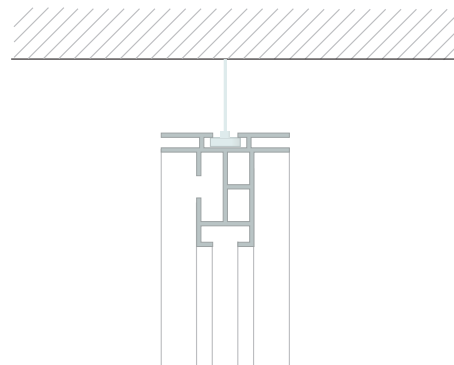


*frame is double 44

Optional

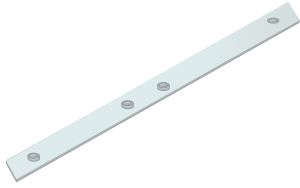


BH7900
Suspended from ceiling.



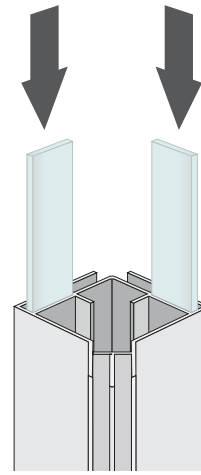
*frame is double 44

Optional

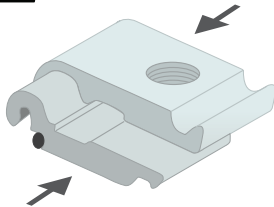


BHESTS

If the length of the frame is longer than 8 feet, an extension set (BHESTS) is included.

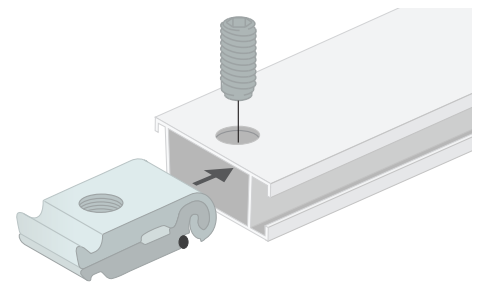


Optional

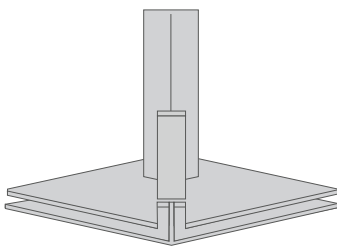


BH0220

When connecting the stabilizer, first place the lockset in the channel.

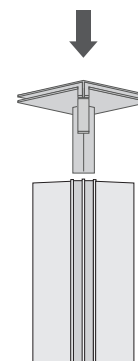


Then put the stabilizer (BFSTS) on the lockset, now tighten the screw with the delivered allen key.

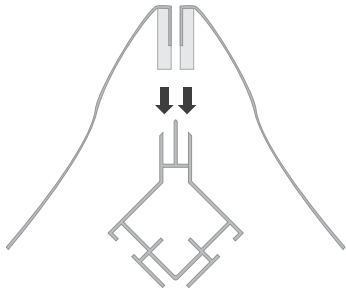


BHCC44EC

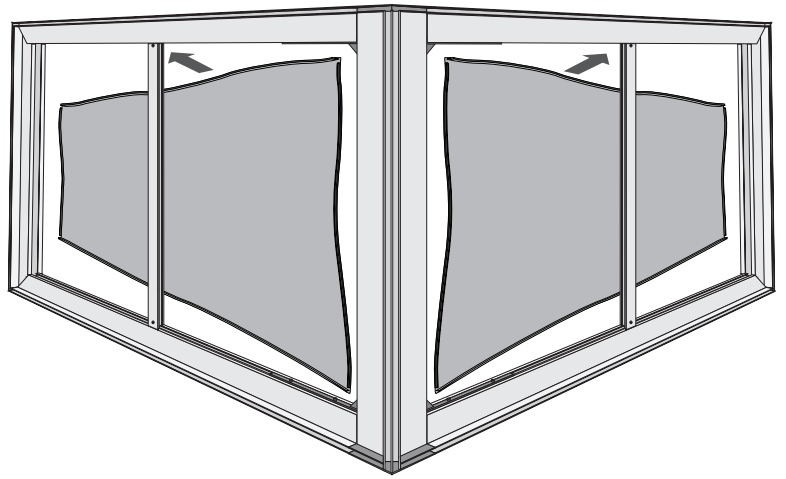
Endcap for all corners of the frame.



Place the endcap on top or bottom of the frame.



Place the textile print in the frame. Start with the corners and press the silicone strip in the channel



EXHIBITION STAND
Illustration of the Concealed Corner (L)
in use as an exhibition stand

