

# LIGHTBOX DOUBLE 100

Standing and hanging textile ledframe

BF100S-C Silver

Colors:



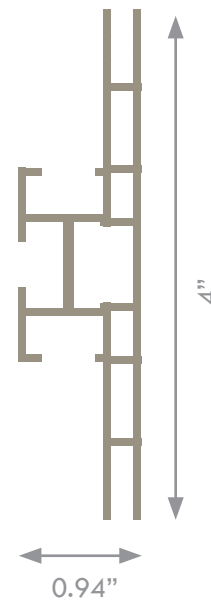
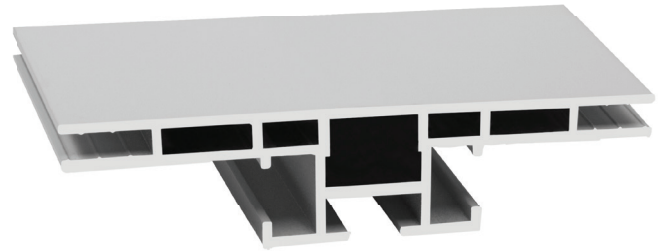
Silver

Available in every color on request.

Application: Freestanding and suspended from ceiling

Width: 4 inches (100mm)

Lumen per yd: 1980



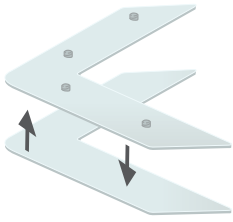
CE  
EL 9206-1148



These double sided 4" inch deep profiles are specially designed to illuminate large size textile prints. Even illumination is provided by BFF's Ultra-LEDs mounted to the inside channel of the frame.

This solid freestanding or suspended frames are perfect for use as a partition wall in a showroom or as a feature in a retail window display facing the street outside, as well as patrons inside the store. Catch attention and maximize visual impressions with BFF lightboxes!

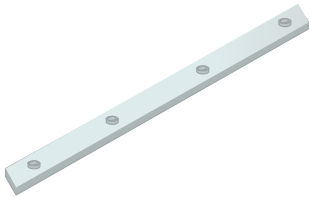
- 4" deep profile enables perfect light distribution
- Two 4" profiles accommodate back lighting or side lighting designs
- Ships unassembled for low cost shipping
- Creates impressive, freestanding or suspended double-sided illuminated displays



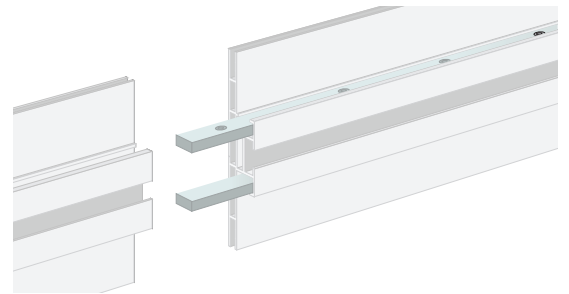
**BH0240**  
Each frame is delivered with 4 locksets 100.



**Optional**

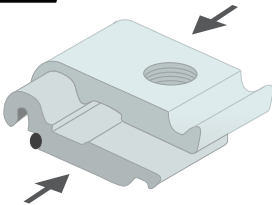


**BHE100**  
If the length of the frame is longer than 90", an extension set (BHE100) is included.

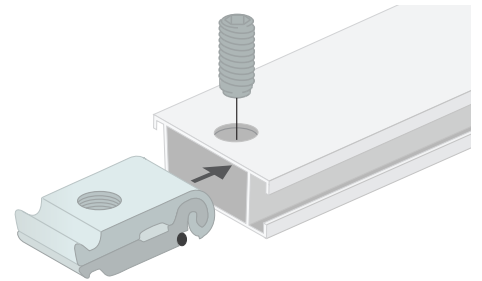


These extension sets can be placed in the channels where the frame is cut in half.

**Optional**



**BH0220**  
When connecting the stabilizer, first place the lockset in the channel.

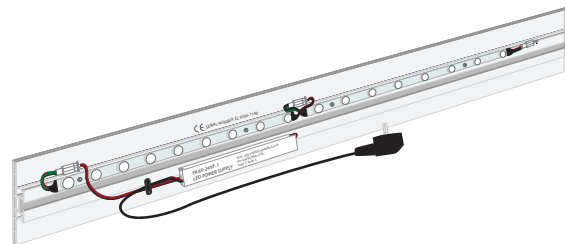


Then put the stabilizer (BF-ST5) on the lockset, now tighten the screw with the delivered allen key.

**Optional**

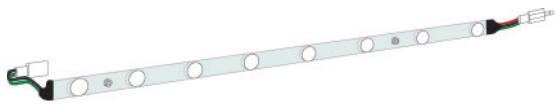


**LED POWER SUPPLY**  
200-240V



Sec.: 24VDC, Max 2.5A  
tc: 80° ta:45°C

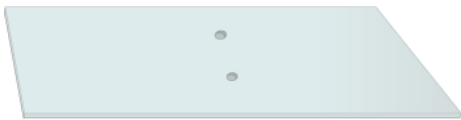
**Optional**



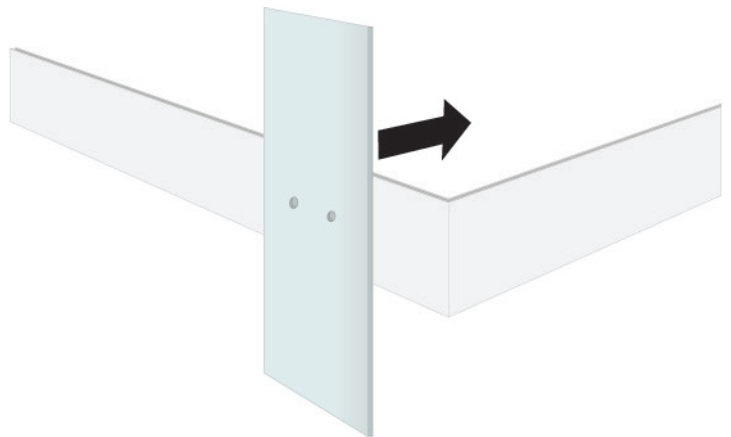
ULTRA LED UNIT  
47cm x 25mm x 15mm. 5000-7000k White.  
9x lenses 2.8W 24V.



**Optional**



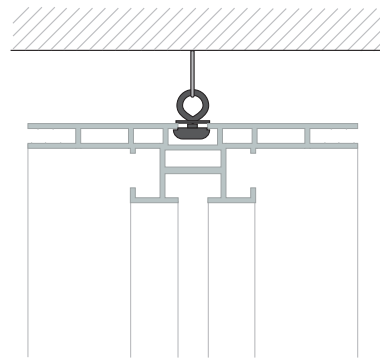
BH0100 / BH0105 / BH0110  
Baseplate for standing. Material: Steel.



**Optional**



BH0360  
Suspended from ceiling.



Up facing frame  
is the Lightbox  
double 100 open



Place the textile print in the frame.  
Start with the corners and press the  
silicone strip in the channel.

